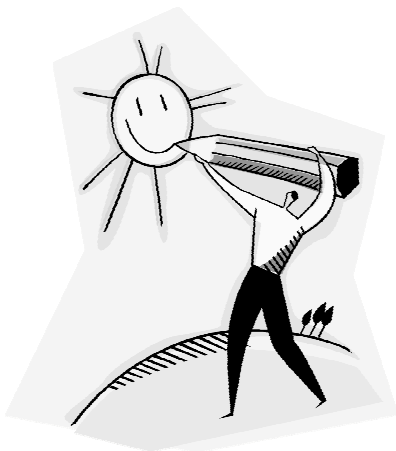


STUDENT SUPPORT SERVICES

MISSION STATEMENT

The student support services team empowers students, parents, teachers, and administrators to help students do their best! We aim to help each student achieve their own highest level of success, whatever that may be. Various problems may effect a student's ability to function and progress in the school environment. We work with others to help identify possible academic, behavioral, or environmental issues and come up with solutions to these. We believe that a child may be just a symptom of the problem, not the cause of it. Above all, we are advocates for children.



The school social worker and school psychologist share office space in Dover and Wingdale Elementary Schools. Usually, we are scheduled such that one of us is in each building every day to ensure adequate coverage. Please use the following contact phone numbers to reach us.



Contact Information:

Dover Elementary School

(845) 877-4700

Wingdale Elementary School

(845) 832-4530

Heather Rolland Fischer, LCSW
School Social Worker

Bill Bowler, MA
School Psychologist



Feel free to contact us if you have any questions or concerns about your child's

DOVER UNION FREE SCHOOL DISTRICT

School Social Worker School Psychologist



Student Support Services At the Elementary level

Message from the Superintendent

As partners in education we realize that the education of our child(ren) is the joint responsibility of the schools, the home, and the student.

Each curriculum brochure has been written to give you, the parent, a broad overview of the skills your child is expected to learn at specific subject and grade levels. This pamphlet does not contain all the skills your child will learn. Rather, it is an outline for you. We hope that you use this guide to help your child at home. Together, we believe much can be accomplished.

Dr. Craig T. Onofry, Ed. D.

Wingdale Elementary School